



## APPLICATION

Application Sites:

- OB/GYN
- Urology

Application Directions:

Follicular Monitoring, Prostate/Pelvics, Uterus, Bladder/Urinary Function.



## FEATURES

- Composed of two probes, a scanner can complete surface and vaginal examination as your choice.
- Small and light, suitable for bedside operation and monitoring.
- Wireless, by using the disposable protecting cover, it can easily solve the sterilization issue of the probe.



## SPECIFICATION

- Scan Angle/Length: Convex 60, Linear 40mm
- Frequency: Convex probe 3.5/5.0 MHz, Linear probe 6.0/8 MHz
- Scan Mode: B, B/M, Color, PW
- Display Depth: Convex 90~305mm, Transvaginal 40~100mm
- Power: Built-in lithium battery, wireless charge 2h, work 2.5h
- Working System: iOS, Android
- WiFi Type: 802.11n / 2.4G / 5G
- Dimension: 270x60x20mm
- Weight: 300g



## WATERPROOF

Reduce medical accidents caused by cross infection, protect doctors and patients, and reduce hospital related expenses.



## WIRELESS CHARGE

Easy and connect with a wireless power bank.



## EASY TO USE

Simple operation, short learning curve for people without ultrasound experience.



## WiFi CONNECT

WiFi connect with your Android phone, iPhone or iPad.

## HIGH QUALITY IMAGES

See The Difference Great Image Quality Makes





Handheld Ultrasound  
Scanner Manufacturer



# DOUBLE PROBE ULTRASOUND

AFFORDABLE  
VISIBLE - FAST - EASY

## GUANGZHOU SONOHEALTH MEDICAL TECHNOLOGIES CO., LTD.

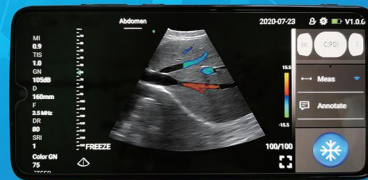
Address: Room 601, Building 3, No.7 Ruitai Road, Huangpu District, Guangzhou, China

E-mail: [hello@sono-health.com](mailto:hello@sono-health.com)

Telephone: +86-02-87831007

Phone/WhatsApp: +86-15013156300

Website: [www.sono-health.com](http://www.sono-health.com)



YOU CAN USE IT ANYTIME & ANYWHERE