



Handheld Ultrasound
Scanner Manufacturer



WIRELESS PROBE ULTRASOUND

AFFORDABLE
VISIBLE - FAST - EASY

GUANGZHOU SONOHEALTH MEDICAL TECHNOLOGIES CO., LTD.

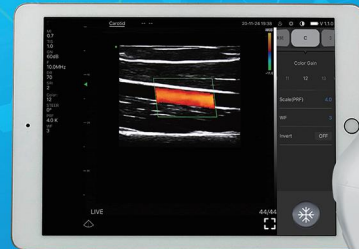
Address: Room 601, Building 3, No.7 Ruitai Road, Huangpu District, Guangzhou, China

E-mail: hello@sono-health.com

Telephone: +86-02-87831007

Phone/WhatsApp: +86-15013156300

Website: www.sono-health.com



YOU CAN USE IT ANYTIME & ANYWHERE



APPLICATION

Application Sites: Small Parts, MSK, Nerve, Vascular access

Application Directions:

- Medical Students training in college: Visual understanding of human body structure or ultrasound image study.
- Preliminary examination: Home care, family planning.
- Visualization tools: Invasive intervention guide, surgical and therapy guidance.
- ODM/OEM: Integration into other multi-functional medical device.



FEATURES

- Super Cost-effective: Students can afford it, just like buying a cell phone.
- Small, light, built in battery: You can easily use it anywhere.
- Remote training and guidance: Based on intelligent terminal, remote training and guidance can be achieved.



SPECIFICATION

- Scan Angle/Length: 40mm
- Frequency: 7.5/10 MHz
- Scan Mode: B, B/M, Color, PW
- Display Depth: 20~100mm
- Power: Built-in lithium battery, USB charge 1.5h, work 1.5h
- Working System: iOS, Android
- WiFi Type: 802.11n / 2.4G / 5G
- Dimension: 115x60x20mm
- Weight: 100g



USB CHARGE

Just simply connect to your laptop or USB charger.



EASY TO USE

Simple operation, short learning curve for people without ultrasound experience.



WiFi & USB CONNECT

- Both WiFi and USB connect as you can choose.
- Use with your Android phone, Laptop, iPhone or iPad.

HIGH QUALITY IMAGES

See The Difference Great Image Quality Makes

